

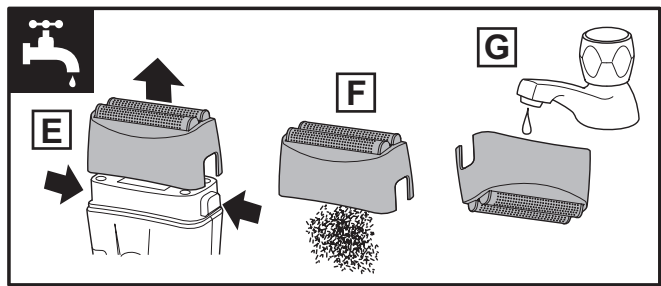
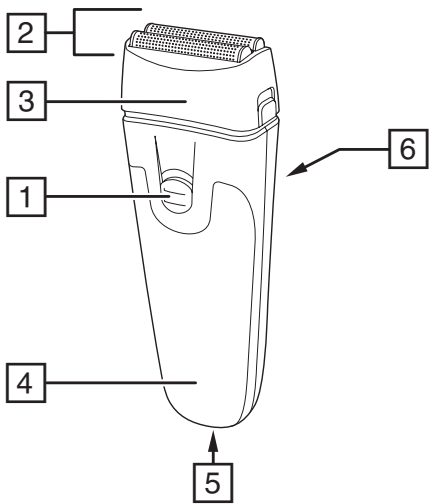
REMINGTON®

EST. NEW YORK 1937



F1 Style Series Foil Shaver F1000AU

www.remington-products.com.au
www.remington.co.nz



IMPORTANT SAFEGUARDS

When using electrical appliances, basic precautions should always be observed, including the following.

READ ALL INSTRUCTIONS BEFORE USING

DANGER: As with most electrical appliances, electrical parts are electrically live even when the switch is off.

For additional protection, the installation of a residual current device (rcd) having a rated residual operating current not exceeding 30 mA is advisable in the electrical circuit supplying the bathroom. Ask your installer for advice.

WARNING: TO REDUCE THE RISK OF BURNS, ELECTROCUTION AND FIRE OR INJURY TO PERSONS

- The appliance should never be left unattended when plugged into a power outlet, except when charging the appliance.
- This appliance is not intended for use by persons (including children) with reduced physical, sensory or mental capabilities, or lack of experience and knowledge, unless they have been given supervision or instruction concerning use of the appliance by a person responsible for their safety.
- Children shall not play with the appliance.
- Cleaning and user maintenance shall not be made by children without supervision.
- Never operate this appliance if it has a damaged cord or plug, if it is not working correctly, if it has been dropped or damaged, or dropped into water. If the supply cord or plug of the appliance is damaged it must be replaced by the manufacturer, its service agent or similarly qualified persons in order to avoid a hazard. It cannot be repaired.
- Keep the cord away from heated surfaces.
- Use and store the product at a temperature between 0°C and 32°C.
- Do not use outdoors or where aerosol (spray) products are being used, or where oxygen is being administered.
- Do not use this appliance with damaged or broken tracks or cutters, as injury may occur.
- Do not plug or unplug the appliance with wet hands.
- For household use only.
- Do not place or store the appliance or power adaptor where it can fall or be

knocked into a sink or bath.

- Do not place in or drop into water or any other liquid.
- If an appliance falls into water, "unplug it" immediately. Do not reach into the water.
- Unplug the charging cable immediately after fully charging.
- Do not use while bathing or in the shower.
- Unplug and switch off this appliance before cleaning it.
- Use this appliance only for its intended use as described in this manual.
- Do not use attachments not recommended by Remington.
- Never drop or insert any object into any opening of this appliance.
- Always store the power adaptor in a moisture-free location.
- Do not use on people who are asleep.
- Do not use an extension cord or a voltage converter with this appliance.
- Do not wrap the cord around the appliance.



The blades are washable under a running tap.

- **WARNING:** Keep the appliance dry.
- When charging, you must use an external supply unit with an output terminal of 5Vdc (the measured maximum output power is less than 15W) and meets the requirements of IEC 60335-1 standard.



This product is not suitable to use in the bath or shower.

SAVE THESE INSTRUCTIONS

PARTS

- | | |
|-----------------------|-----------------------------|
| 1. On/off switch | 6. Pop-up trimmer (on back) |
| 2. Shaving foils | Not shown: |
| 3. Hair pocket | • Head guard |
| 4. Charging indicator | • USB cable |
| 5. Charging connector | • Cleaning brush |
-

GETTING STARTED

CHARGING YOUR SHAVER

1. Ensure the product is switched off.
2. Connect the product to the USB cable and then to the USB end of the cable to a powered USB port.

CHARGING INDICATOR

Charge Level	Indicator
Charging	Light flashes
Fully charged	Light stays on
Battery Low	Light flashes rapidly

- Run time from fully charged is up to 30 minutes.
- Charge time from empty is 8 hours.
- To preserve the life of your batteries, let them run out every 6 months then recharge for 24 hours.

INSTRUCTIONS FOR USE

It is recommended that you use your new shaver daily for up to four weeks to allow time for your beard and skin to become accustomed to the new shaving system.

SHAVING

1. Switch the shaver on.
2. Stretch the skin with your free hand so the hairs stand upright.
3. Hold the shaving head so that the foils touch your face.
4. Use short, linear strokes.

TRIMMING

1. Slide up the trimmer release button to activate the trimmer.
2. Hold the trimmer at a right angle to your skin.
3. Use the release button to retract the trimmer after use.

TIPS FOR BEST RESULTS

- Always hold the shaver at right angles to the skin so that all foils are touching the skin with equal pressure.
- Use moderate to slow stroking movements. The use of short linear motions in stubborn areas may obtain a closer shave, especially along the neck and chin line.
- DO NOT press hard against the skin in order to avoid damage to the foil heads.

CARE FOR YOUR SHAVER

Care for your shaver to ensure a long lasting performance. We recommend you clean your shaver after each use.

The easiest and most hygienic way to clean the appliance is by rinsing the appliance head after use with warm water.

IMPORTANT The body of this appliance is not washable or water resistant.

1. Press the head release buttons and pull the head upwards (FIG A).
2. Tap out the excess hair shavings and rinse the foils under running water. (FIG. B, C).
3. Do not clean the shaving foil with a brush.

REPLACING THE FOILS AND CUTTERS

- To ensure the continued highest quality performance from your shaver, we recommend that the foil and cutter are replaced regularly.

Signs that your foil/s and cutter/s need replacing:

- Irritation: as foils get worn, you may experience skin irritation.
- Pulling: as the cutters wear, your shave may not feel as close and you may feel the cutter pulling your hair.
- Wear through: you may notice that the cutters have worn through the foils.

TO REPLACE THE FOIL/CUTTERS

1. Press the head release buttons and pull the head upwards (FIG A).
2. Fit the new head assembly over the hair pocket and press down to click into place.

REMOVING THE RECHARGEABLE BATTERY

This appliance contains batteries that are non-replaceable. When the battery is at the end of its life, the appliance and nickel metal hydride battery must be properly disposed of at an official recycling point.

We strongly recommend that a professional removes the rechargeable battery. Parts of the shaver case, and tools have sharp edges and may cause injury if not handled correctly.

- The battery must be removed from the appliance before it is scrapped.
 - Disconnect the charging adapter before removing the battery.
 - Be aware of the risk of terminals of the battery-operated appliance or battery being short circuited by metal objects.
1. Ensure that the battery is fully discharged. To do this, operate the device until it stops.
 2. Press the head release buttons and pull the head off and then remove two cutters.
 3. Unscrew the 4 screws on the top of the device.
 4. Use a small flat screwdriver to pry the back off the device.
 5. Pry off and remove the base of head and decorative ring.

6. Pry off the rear panel then remove the screw.
 7. Remove the front housing to expose the battery.
 8. Cut the two wires and remove the battery.
- Used batteries must be removed from the appliance and disposed of at an appropriate official recycling/collection point.
 - Do not attempt to operate the device once you have opened it.
 - Caution: Do not put in the fire or mutilate your batteries when disposing as they may burst and release toxic materials. Do not short circuit as it may cause burns.

DISPOSAL/RECYCLING

Legislation in some localities mandates that e-waste (anything with a plug, battery or cord) is disposed of through controlled recycling facilities and must not be disposed of in general household waste. For more information about recycling of electrical and battery operated appliances, please contact your local council or your local household waste disposal service.

Spectrum Brands Australia Pty Ltd and Spectrum Brands New Zealand Ltd WARRANTY AGAINST DEFECTS

In this warranty:

Australian Consumer Law means the Australian consumer law set out in Schedule 2 to the Competition and Consumer Act 2010;

CGA means the New Zealand Consumer Guarantees Act 1993;

Goods means the product or equipment which was accompanied by this warranty and purchased in Australia or New Zealand, as the case may be;

Manufacturer, We or us means:

1. for Goods purchased in Australia, Spectrum Brands Australia Pty Ltd ABN, 78 007 070 573; or

2. for Goods purchased in New Zealand, Spectrum Brands New Zealand Ltd, as the case may be, contact details as set out at the end of this warranty;

Supplier means the authorised distributor or retailer of the Goods that sold you the Goods in Australia or in New Zealand; and

You means you, the original end-user purchaser of the Goods.

1. Our goods come with guarantees that cannot be excluded under the Australian Consumer Law, or the CGA. You are entitled to a replacement or refund for a major failure and compensation for any other reasonably foreseeable loss or damage. You are also entitled to have the goods repaired or replaced if the goods fail to be of

acceptable quality and the failure does not amount to a major failure.

2. The benefits provided by this Warranty are in addition to all other rights and remedies in respect of the Goods which the consumer has under either the Australian Consumer Law or the CGA. The original purchaser of the Goods is provided with the following Warranty subject to the Warranty Conditions:

3. We warrant the Goods for all parts defective in workmanship or materials for the period of two (2) years from the date of purchase (Warranty Period). If the Goods prove defective within the Warranty Period by reason of improper workmanship or material, we may, at our own discretion, repair or replace the Goods without charge.

Warranty Conditions

4. The Goods must be used in accordance with the manufacturer's instructions. This Warranty does not apply should the defect in or failure of the Goods be attributable to misuse, abuse, accident or non-observance of manufacturer's instructions on the part of the user. As far as the law permits, the manufacturer does not accept liability for any direct or consequential loss, damage or other expense caused by or arising out of any failure to use the Goods in accordance with the manufacturer's instructions.

5. Consumable parts (such as shaver heads, cutters and foils) of the Goods are included under this Warranty only where there is a defect in workmanship or materials used.

6. The warranty granted under clause 3 is limited to repair or replacement only.

7. Any parts of the Goods replaced during repairs or any product replaced remain the property of the manufacturer. In the event of the Goods being replaced during the Warranty Period, the warranty on the replacement Goods will expire on the same date as for the Warranty Period on the original Goods which are replaced.

8. In order to claim under the warranty granted under clause 3 you must:

(a) Retain this warranty with your receipt/proof of purchase; and

(b) Return the Goods to us at the relevant address below or to the Supplier by prepaid freight within the Warranty Period accompanied with (i) the legible and unmodified original proof of purchase, which clearly indicates the name and address of the Supplier, the date and place of purchase, the product name or other product serial number and (ii) this warranty.

9. This warranty is immediately void if:

(a) Any serial number or appliance plate is removed or defaced;

(b) The Goods have been serviced or otherwise repaired by a person not authorised to do so by us or where non approved replaced parts are used.

10. The Goods are designed for domestic use only. A limited 90-day Warranty applies to any industrial or commercial use of the Goods. The Goods must be connected to the electrical voltage requirements as specified in the ratings label located on the Goods.

11. This warranty does not cover the cost of claiming under the warranty or transport of the Goods to and from the Supplier or us.

12. This warranty is only valid and enforceable in Australia against Spectrum Brands Australia Pty Ltd and in New Zealand against Spectrum Brands New Zealand Limited.

Contact us or the Supplier for further details.

Spectrum Brands Australia Pty Ltd

Locked Bag 3004

Braeside, VIC 3195

AUSTRALIA

Customer service in Australia: 1800 623 118

E-mail: consumer.enquiry@remington-products.com.au

Website: www.remington-products.com.au

Spectrum Brands New Zealand Limited

PO Box 9817

Newmarket, Auckland 1149

NEW ZEALAND

Customer service in New Zealand: 0800 736 776

E-mail: info@remington.co.nz

Website: www.remington.co.nz

REMINGTON®
EST. NEW YORK 1937

