

REMINGTON®



Official Electrical Styling Partner of Manchester United

Durablade Hybrid Groomer

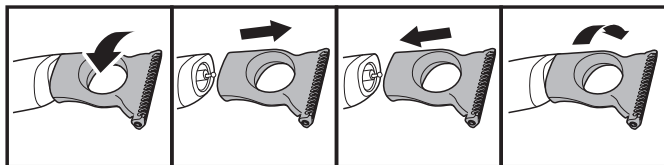
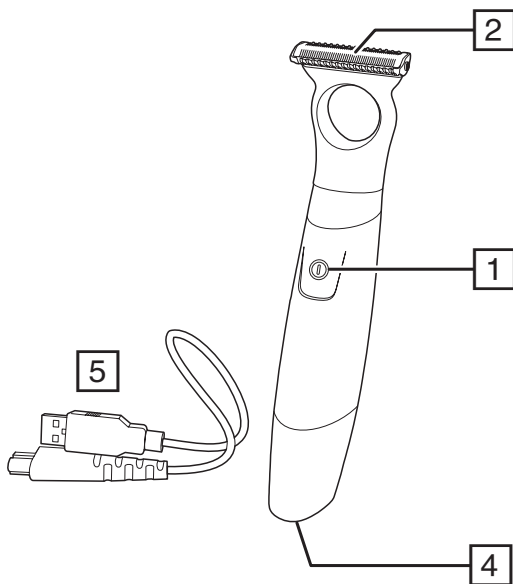


MB055

 www.remington.co.uk

Register online for an **EXTRA** year guarantee

Visit uk.remington-europe.com/product-registration You must register within 28 days of purchase.



Thank you for buying your new Remington® product. Please read these instructions carefully and keep them safe. Remove all packaging before use.

IMPORTANT SAFEGUARDS

- This appliance can be used by children aged from 8 years and above and persons with reduced physical, sensory or mental capabilities or lack of experience and knowledge if they have been supervised/instructed and understand the hazards involved. Children shall not play with the appliance. Cleaning and user maintenance shall not be done by children unless they are older than 8 and supervised. Keep the appliance and cable out of reach of children under 8 years.

 Suitable for use in a bath or shower.

- Do not use the product with a damaged cord. A replacement can be obtained via our International Service Centres.
- Do not leave the appliance unattended while plugged in except when charging.
- Do not use attachments other than those we supply.
- Do not use the appliance if it is damaged or malfunctions.
- Do not plug or unplug the appliance with wet hands.
- This appliance is not intended for commercial or salon use.

PARTS

- | | |
|---------------------------|-------------------------|
| 1. On/Off switch | <i>Not shown:</i> |
| 2. Blade | 5. Combs (1, 2, 4, 6mm) |
| 3. LED charging indicator | 6. Travel pouch |
| 4. USB charging cable | |

GETTING STARTED

Charging your appliance

It is recommended to fully charge your appliance before using for the first time. Please refer to the charge times shown in this book.

- Ensure the product is switched off.
- Connect the product to the USB cable. Connect the other end of the cable to the supplied USB adapter or to a powered USB port.

Charge level indicators

Charge Level	Indicator
Charging	LED shows solid
Low charge	LED flashes rapidly
Full charge	LED will turn off

- Run time from fully charged is up to 60 minutes.
- Charge time from empty is 4 hours.

Note: To preserve the life of your batteries, let them run out every 6 months then fully charge.

INSTRUCTIONS FOR USE

Switch the product on by pressing the On/Off switch.

Always comb your beard or moustache with a fine comb before you start trimming.

Changing blade heads

1. To remove a blade head, twist it anticlockwise and pull it away from the body.
2. To refit, place the blade on to the body and twist it clockwise until it locks.

Attaching and removing the combs

1. Select the desired trimming length comb. Place the comb over the top of the blade and gently push this down onto the blade until it clicks into place.
2. To remove the comb, grasp the comb and pull firmly upwards and away from the groomer.

To trim the beard

1. Select your desired trimming length comb. If you are trimming for the first time start with the maximum trimming length setting.
2. Turn the unit on.
3. Place the flat top of the fixed comb against the skin.
4. Slowly slide through the hair. Repeat from different directions as necessary.
5. If hair builds up in the trimmer comb during the trimming process, switch the unit off, pull off the comb and brush the hair off.

To get a shaven look

To trim any length of beard or stubble hair for a clean, shaven look then follow the above steps without a comb attached to the blade head.

Place the flat top of the blade against the skin and slowly slide through the hair against the direction of growth.

TRIMMING AND EDGING

1. Hold the groomer with the back side of the blade facing you with no combs attached.
2. Start with the blades resting lightly against your skin, use motions towards edge of beard line to trim to desired locations in facial area.
3. Shape as desired.

Trimming with shaving gel

Follow the same instructions as dry shaving if using shaving gel.

Caution: After use with shaving gel, please rinse the blade under warm water to clean away any excess gel and debris.

CARE OF YOUR GROOMER

To ensure long lasting performance of the groomer, clean after each use.

The easiest and most hygienic way to clean the groomer is by rinsing the head under the tap after use while the blades are running.

To keep the unit in optimal condition we recommend re-oiling the blades after cleaning. Place a few drops of cutter or sewing machine oil onto the blades. Wipe off excess oil.

BATTERY REMOVAL

The battery must be removed from the appliance before it is scrapped.

The appliance must be disconnected from the supply mains when removing the battery.

1. Ensure the trimmer is discharged of all power.
2. Remove the comb attachment.
3. Detach the blade head.
4. Pry off the bottom gap below the grips.
5. Press in exposed tabs and pull internal frame out.
6. Disconnect the battery from the circuit board and internal frame.
7. The battery is to be disposed of safely.

RECYCLING



To avoid environmental and health problems due to hazardous substances, appliances and rechargeable and non-rechargeable batteries marked with one of these symbols must not be disposed of with unsorted municipal waste. Always dispose of electrical and electronic products and, where applicable, rechargeable and non-rechargeable batteries, at an appropriate official recycling/ collection point.

SERVICE AND GUARANTEE



Defects affecting product functionality appearing within the guarantee period will be corrected by replacement or repair at our option provided the product is used and maintained in accordance with the instructions. Your statutory rights are not affected. To claim an extra 1 year guarantee, register your product online within 28 days of purchase.

Register at: <https://uk.remington-europe.com/product-registration>

Consumables are guaranteed only for their recommended lifecycle. Replacement/spare parts* are excluded and are only covered by a 1 year warranty.


*Examples include, but are not limited to, adaptors, haircare attachments, grooming accessories, etc.

SERVICE CENTRE

United Kingdom

 0800 212 438 (free call mainland UK)
Spectrum Brands (UK) Ltd
Fir Street, Failsworth, Manchester
M35 0HS, UK
www.remington.co.uk

Ireland

 142 951 40
Remington Consumer Products,
Unit B12, Ballymount Corporate Park,
Ballymount, Dublin 12
<https://ie.remington-europe.com>

Ref. No. MB055

Type No. MB12A

19/UK/ MB055 T22-7000993-C Version 05 /19

Remington® is a Registered Trade Mark of Spectrum Brands, Inc., or one of its subsidiaries.

Spectrum Brands (UK) Ltd

Fir Street,

Failsworth,

Manchester

M35 0HS

www.remington.co.uk

© 2019 Spectrum Brands, Inc.